

Old Overton Gym

Volunteers preserving local history and building the community

Fall 2007

Dear Century Club Member:

The volunteers and Board of Directors at the Old Gym are pleased to announce that since opening the doors of this treasured and restored facility in April of 2006, over 32,000 community members have once again filled our Old Gym with laughter, music and fun. This packet is sent to you to inform you of rate changes at Old Gym.

Old Gym was restored with County Commissioner funding and State of Nevada Historical Grants and now it is the responsibility of the Board to insure the facility remains in good repair, open and safe for Clark County School District, Clark County Recreation programs and the community in general to use. The Old Gym remains a Clark County School District building and our lease agreement clearly states that school functions take precedence with the understanding that Clark County Parks and Recreation has an agreement enabling them to use the school district facilities also at no charge. The Old Gym enjoys a good working relationship with our valley schools and the staff of Parks and Recreation and will continue to work together with our common goals in mind.

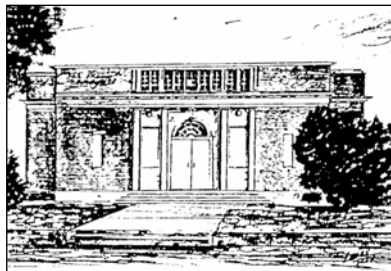
To also comply with our lease agreement and General Liability policy, it is important that some of those needing to use the Old Gym obtain and provide Proof of General Liability Insurance. If your group or function falls within those insurance liability requirements, an attached information sheet has been attached for you in mind.

The Board of Directors have operated the facility for over a year on contributions and a small rental compensation and wish to implement a rate guideline formula that will fulfill our goal of fiscal responsibility to ensure Old Gym is open for years of memory making.

Please review the following Rate Guidelines and Insurance Requirements information and understand that the Board welcomes discussion as to how we can assist you and your organization while fulfilling our duties keeping Old Gym a great place to house your functions.

Sincerely,

The Society to Protect Old Overton Gymnasium Board of Directors (SPOOG)



353 West Thomas Street ▪ PO Box 313 ▪ Overton, Nevada 89040
Phone: (702)397-2002 ▪ E-mail oldovertongym@mvdsl.com

Old Overton Gym

Volunteers preserving local history and building the community

Building Rate Chart

Rev 10/2007

- It is a goal of the Old Gym Board of Directors to keep this facility in good, clean and safe working order while also keeping costs at a minimum. Please understand and inform your group of their responsibility in keeping the building clean and in good repair.
- Be aware that this building is property of Clark County School District and you and your group will agree to follow the CCSD Building Use Guidelines.
- Be aware that scheduled school functions will have precedence and every effort will be made by the Old Overton Gym to provide space for you and the community.
- Our Lease Agreement with owners Clark County School District might require you to provide an Insurance Certificate before your use of the building. See Insurance Certificate requirements.
- Be considerate of the Old Gym Volunteers and others who want to schedule events. If you have reserved a time and you find you no longer need it, please contact Old Gym as soon as possible.
- Please complete a Facility Use Form and return it to Old Gym staff and comply with the guidelines contained and Cleaning Checkout List.

	<u>BUILDING RENTAL FEE</u> (PER EVENT)
CENTURY CLUB MEMBERS Individuals who contribute an annual minimum of \$100	\$100.00
CENTURY GOLD CORPORATE or GROUP MEMBERS: Businesses or Clubs/Groups contributing an annual minimum of \$250	\$100.00
FOR PROFIT EVENTS or NON-MEMBERS: Events where marketing takes place, or those not wishing to be members	\$300.00
HUMANITARIAN or Non Profit EVENTS: The Old Gym has just about been humanitarian-ed right out of business. The volunteers and board of directors urge groups involved in the many worthwhile projects in our area to please budget in our rental fees within your group and encourage your members to join the Century Club.	\$100.00
FREQUENT USER PROGRAM: Individuals or Groups that have joined the Century Club and wish to use the facility for weekly or monthly events may be rated individually, and be assessed an annual/monthly fee.	<u>See Old Gym staff for guidelines</u>

If you have questions or to schedule your event, please call the Old Gym.

*The volunteers at the **Old Overton Gym** appreciate your support and cooperation and will do everything possible to keep this facility in great shape and open to the public.*

***Old Overton Gym** is a Tax Deductible, Non Profit Organization and is always accepting contributions of funds and time.*

Call for more information

353 West Thomas Street ▪ PO Box 313 ▪ Overton, Nevada 89040
Phone: (702)397-2002 ▪ E-mail oldovertongym@mvdsl.com